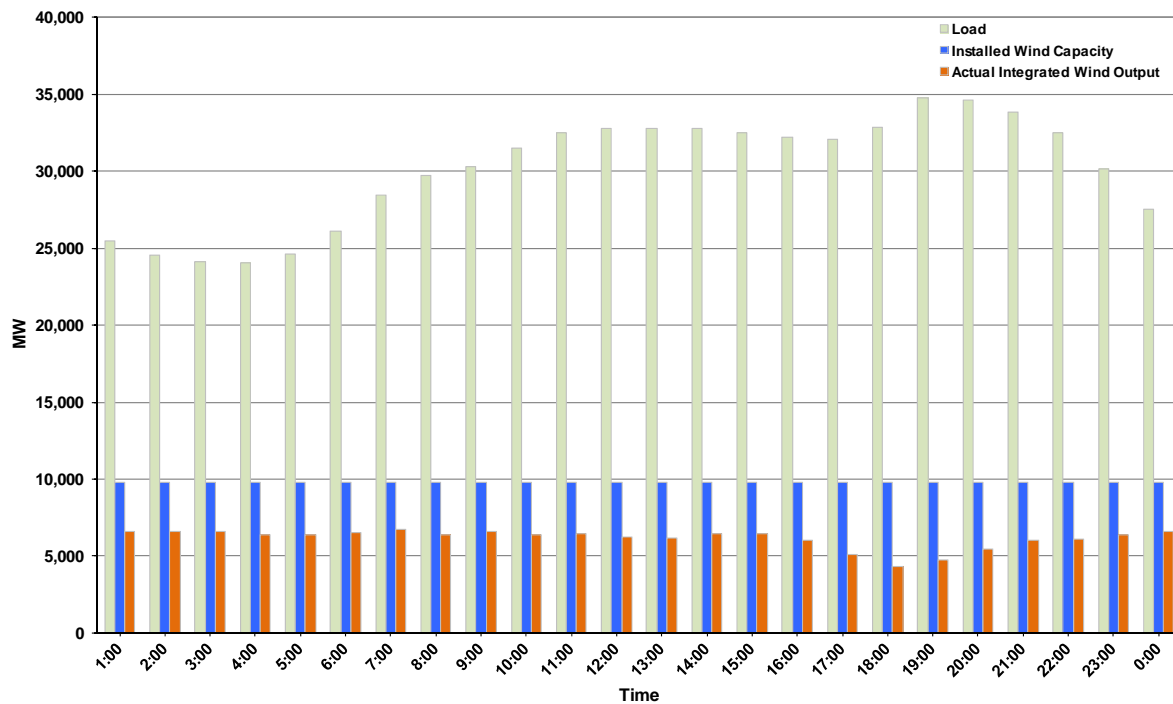




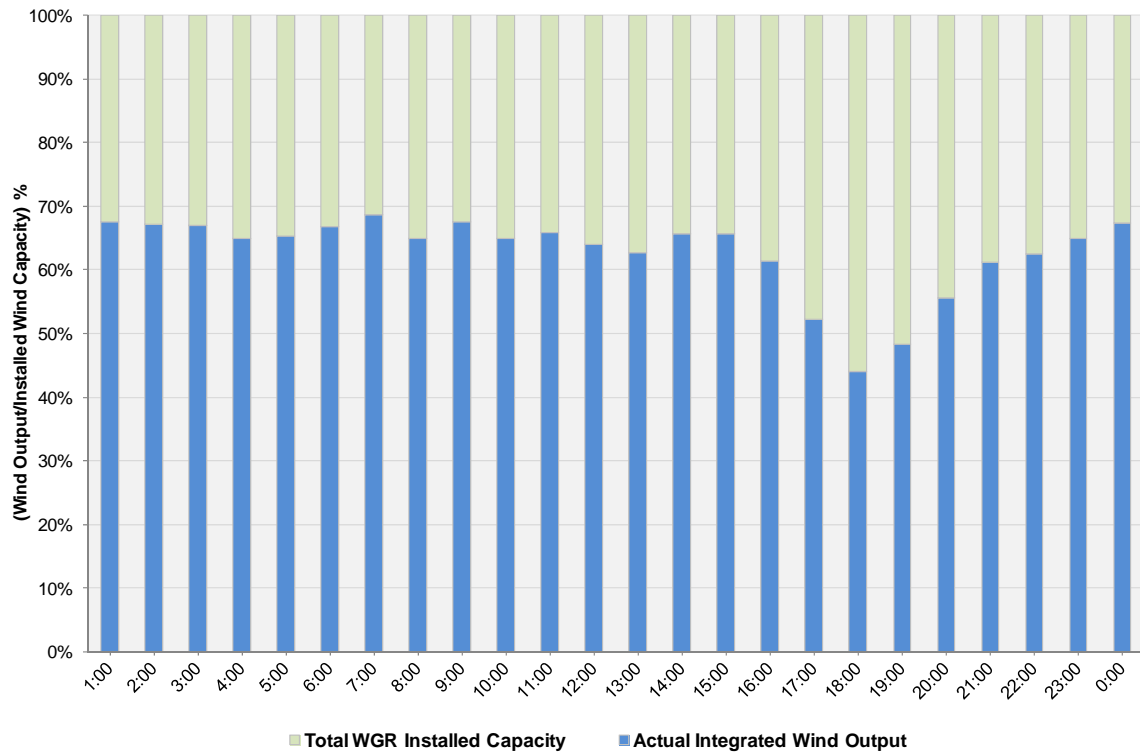
ERCOT Grid Operations Wind Integration Report: 01/16/12

Peak Load	34,784 MW
Load Peak Hour (HE)	19
Wind over Peak	4,729 MW
Wind Record 10/07/11	7,400 MW
Max Wind Value	6,827 MW
Wind Peak Time	06:24
Wind Integration %	24.15%

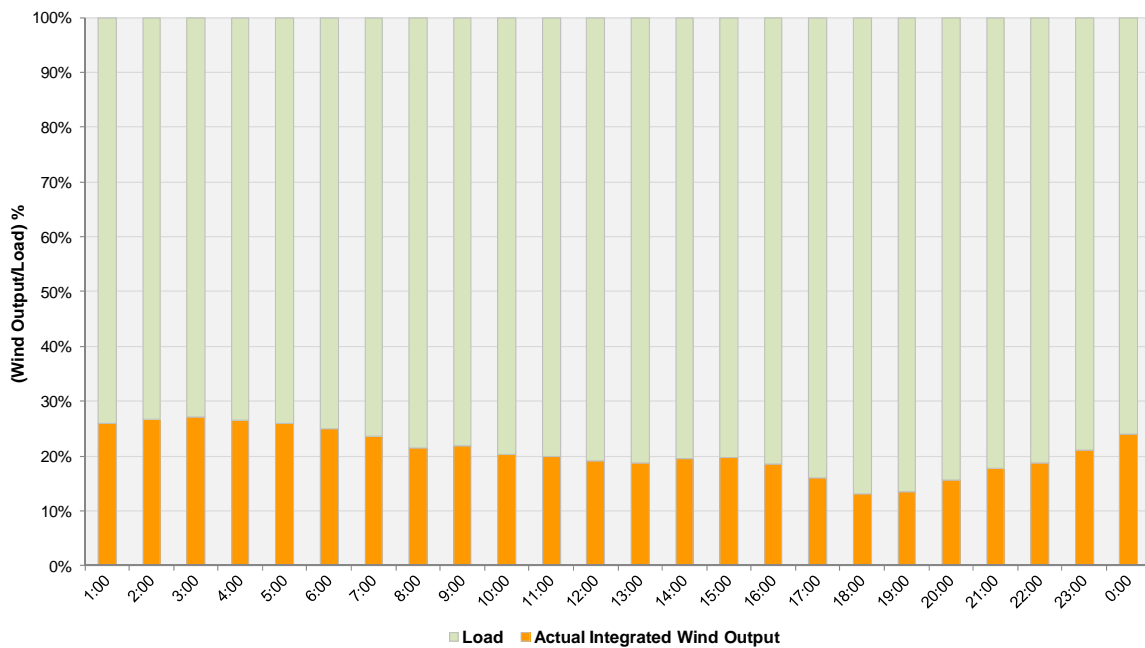
Hourly Average Actual Load vs. Actual Wind Output
01-16-2012



Actual Wind Output as a Percentage of the Total Installed Wind Capacity
01-16-2012



Actual Wind Output as a Percentage of the ERCOT Load
01-16-2012



ERCOT Load vs. Actual Wind Output 1/9/2012 - 1/16/2012

